



Technical Data // Series 3012/2GSL

Switching Test Probe with Easy-Replacement System 138 mil / 3.5 mm - Switching Travel 1.7 mm

HIGHLIGHTS

Test Probe with switching function for cable harness test and presence verification

Easy-replacement system (replacement without soldering)

Version for large tip diameters

Variable extension height

Switching travel 1.7 mm

Long full travel

High soldering temperature up to 300°C

MECHANICAL DATA

Center 3.50 mm/138 mil

Temperature Range -30 °C - +120 °C

Full Travel 11.00 mm

Working Travel 9.00 mm

Switching Travel 1.70 mm

Pre-loaded Spring Force 0.40 N

Spring Force at Working Travel 2.00 N

Spring Force at Switching Travel 0.60 N

ELEKTRISCHE WERTE ELECTRICAL DATA

Receptacle-Plunger

Max. Current Rating 10.0 A

Typical Continuity Resistance <= 15 mOhm

Pin-Plunger

Max. Current Rating 1.0 A

Typical Continuity Resistance <= 50 mOhm

Typical Insulating Voltage 1000 V

MATERIALS

Barrel Brass, gold-plated

Spring Spring Steel, gold-plated

Plunger CuBe

Receptacle Brass, gold-plated

RECOMMENDED DIAMETER OF DRILL

H 3011/GWR5 (/R /RK)

HP 2361.1 (Trolitax) 3.02 mm

HGW 2372 3.04 mm

H 3011/K (/5K)

HP 2361.1 (Trolitax) 3.01 mm

HGW 2372 3.02 mm

AVAILABLE SCREW TOOLS

Article Designation max. Tip Diameter

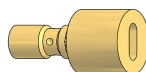
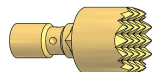
WFSB 3012/G-S1.8 alle



Technical Data // **Series 3012/2GSL**

Switching Test Probe with Easy-Replacement System 138 mil / 3.5 mm - Switching Travel 1.7 mm

TIP STYLE - DIAMETER - PLATING

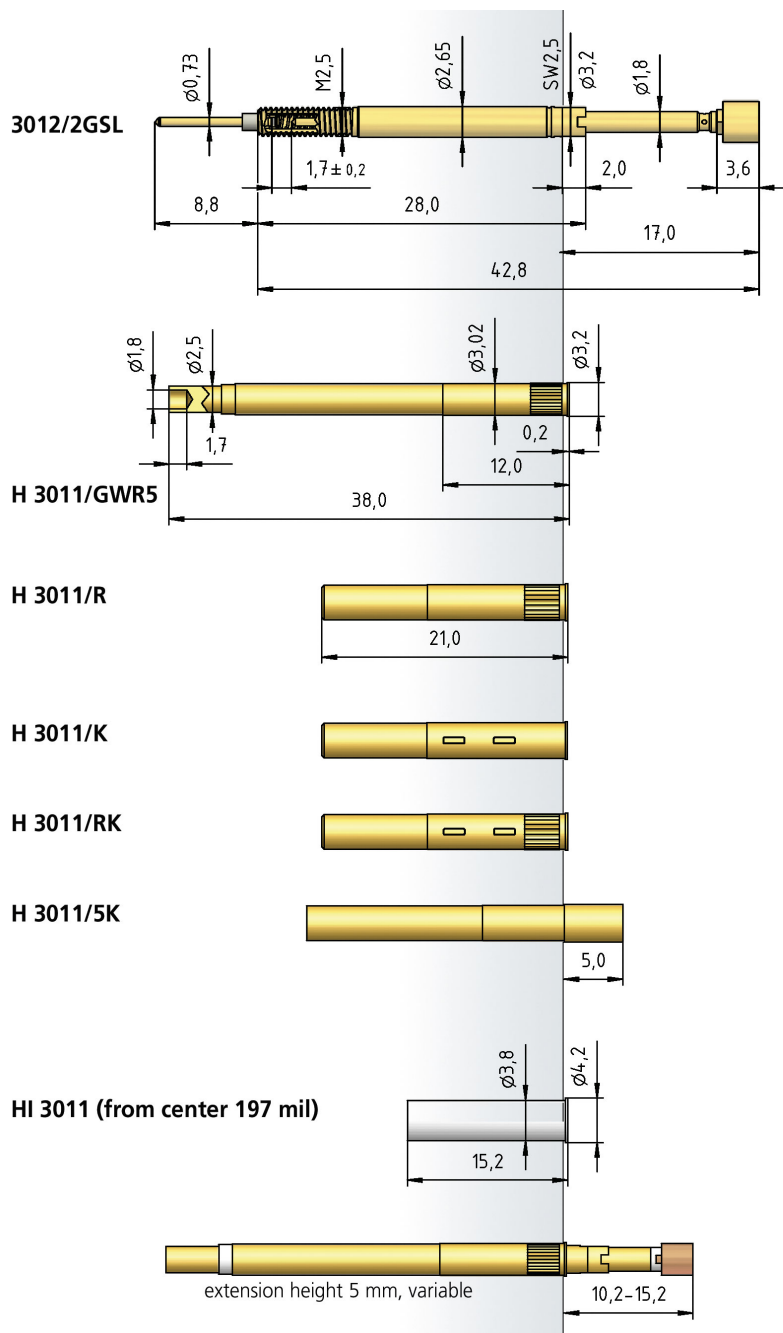


C

F

3.50C Au

3.50C Au



HOW TO ORDER

3012/ 2 G S L - F - 1.8 N - Au - 3.0 C

1 2 3 4 5 6 7 8 9 10

- 1. Series 2. Collar Height 3. Threaded Design
- 4. Plug-in Connector 5. Long Travel 6. Tip Style
- 7. Spring Force 8. Tip Plating 9. Tip Diameter
- 10. Tip Material (only for CuBe)