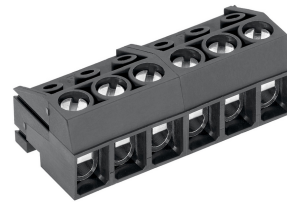


# AK130/..-5.0-GREY



A Phoenix Mecano Brand

## Technical Data

Wire sizes		Insulating Material	
Solid min	0.14 mm <sup>2</sup>	Material	PA 6.6
Solid max	2.5 mm <sup>2</sup>	Flammability Class	UL 94 V-0
Stranded (flexible) min	0.14mm <sup>2</sup>	<b>Temperatures</b>	
Stranded (flexible) max	1.5 mm <sup>2</sup>	Operating Temperature (without mech. load)	-40 °C - 105 °C
Stranded with Ferrule min	0.14 mm <sup>2</sup>	Store Temperature	-40 °C - 105 °C
Stranded with Ferrule max	1.5 mm <sup>2</sup>	<b>Wave Soldering Process</b>	
<b>Dimensions</b>		Soldering Temperature, recommended	-
Stripped Length	6.0 mm	Peak Soldering Time, recommended	-
<b>Materials</b>		<b>Reflow Process</b>	
Clamp	Brass	Soldering Temperature, recommended	-
Screw	Steel	Peak Soldering Time, recommended	-
Contact Spring	Copper Alloy		

## Colours

	GREY, RAL 7016
	LIGHT GREY, RAL 7035
	GREEN, RAL 6018
	ORANGE, RAL 2011
	RED, RAL 3003
	BLUE, RAL 5015
	YELLOW, RAL 1018
	LIGHT GREEN, similar RAL 6018

Colours according to RAL, there may be variations on colour due to production conditions. Special colours on request.

## Counterparts (Spacing 5.0 mm)

Pin Strip

STL130	STL132	STL140
In combination of connectors with different admission data, the lower value is valid.		

## Order Data (Spacing 5.0 mm)

Poles	Width (mm)	Article Designation	Article Number	PU
2	10.70	AK130/2-5.0-GREY	50130020001 G	250
3	15.70	AK130/3-5.0-GREY	50130030001 G	250
4	20.70	AK130/4-5.0-GREY	50130040001 G	250
5	25.70	AK130/5-5.0-GREY	50130050001 G	250
6	30.70	AK130/6-5.0-GREY	50130060001 G	250
7	35.70	AK130/7-5.0-GREY	50130070001 G	250
8	40.70	AK130/8-5.0-GREY	50130080001 E	100
9	45.70	AK130/9-5.0-GREY	50130090001 E	100
10	50.70	AK130/10-5.0-GREY	50130100001 E	100
11	55.70	AK130/11-5.0-GREY	50130110001 E	100
12	60.70	AK130/12-5.0-GREY	50130120001 E	100

## Accessoires

Figure	Designation	Article Number
	Bridge, 2-pole, insulated, BRI/2-5.0/5.08-LIGHT GREY	Order Data: 50000000006
	Bridge, 3-pole, insulated, BRI/3-5.0/5.08-LIGHT GREY	Order Data: 50000000007
	Bridge, 2-pole, BR/2-5.0/5.08-L7.0	Order Data: 50000000008

## Ratings

UseGroup	C <sup>RU</sup> US			VDE	
	B	C	D		
Rated Voltage	300 V	150 V	300 V	250 V	
Rated Current	8 A	8 A	8 A	7 A	
Overvoltage Category				III	
Rated Wire Size				min	max
- solid	AWG 22-12	AWG 22-12	AWG 22-12	0.5 mm <sup>2</sup> (5 A)	2.5 mm <sup>2</sup> (7 A)
- stranded	AWG 22-14	AWG 22-14	AWG 22-14	0.5 mm <sup>2</sup> (5 A)	1.5 mm <sup>2</sup> (7 A)
Torque	0.45 Nm	0.45 Nm	0.45 Nm	0.40 Nm	
Screw Size	M2.6	M2.6	M2.6	M2.6	
Test Voltage	1.60 kV	1.30 kV	1.60 kV	4.0 kV	
Pollution Degree				3	