

AK1200/..-5.0-GREEN

- 17 to 24 poles on request



A Phoenix Mecano Brand



Technical Data

Wire sizes		Insulating Material	
Solid min	0.2 mm ²	Material	PA 6.6
Solid max	4.0 mm ²	Flammability Class	UL 94 V-0
Stranded (flexible) min	0.2mm ²	Temperatures	
Stranded (flexible) max	2.5 mm ²	Operating Temperature (without mech. load)	-40 °C - 105 °C
Stranded with Ferrule min	0.25 mm ²	Store Temperature	-40 °C - 105 °C
Stranded with Ferrule max	2.5 mm ²	Wave Soldering Process	
Dimensions		Soldering Temperature, recommended	-
Stripped Length	10.0 mm	Peak Soldering Time, recommended	-
Materials		Reflow Process	
Screw	Steel	Soldering Temperature, recommended	-
Contact Spring	Bronze	Peak Soldering Time, recommended	-
Clamp Cage	Steel		
Excenter	Steel		

Colours

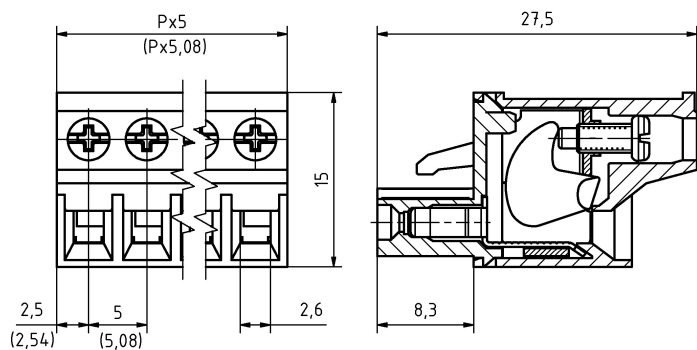
- GREEN, RAL 6018
- LIGHT GREEN, similar RAL 6018

Colours according to RAL, there may be variations on colour due to production conditions. Special colours on request.

Counterparts (Spacing 5.0 mm)

Pin Strip				
STL950	STL950-HT	STL950-G-HT	STL955	STL975

In combination of connectors with different admission data, the lower value is valid.



Order Data (Spacing 5.0 mm)

Poles	Width (mm)	Article Designation	Article Number	PU
2	10.08	AK1200/2-5.0-GREEN	51200020001 D	50
3	15.08	AK1200/3-5.0-GREEN	51200030001 D	50
4	20.08	AK1200/4-5.0-GREEN	51200040001 D	50
5	25.08	AK1200/5-5.0-GREEN	51200050001 D	50
6	30.08	AK1200/6-5.0-GREEN	51200060001 D	50
7	35.08	AK1200/7-5.0-GREEN	51200070001 D	50
8	40.08	AK1200/8-5.0-GREEN	51200080001 D	50
9	45.08	AK1200/9-5.0-GREEN	51200090001 D	50
10	50.08	AK1200/10-5.0-GREEN	51200100001 D	50
11	55.08	AK1200/11-5.0-GREEN	51200110001 D	50
12	60.08	AK1200/12-5.0-GREEN	51200120001 D	50
13	65.08	AK1200/13-5.0-GREEN	51200130001 D	50
14	70.08	AK1200/14-5.0-GREEN	51200140001 D	50
15	75.08	AK1200/15-5.0-GREEN	51200150001 D	50
16	80.08	AK1200/16-5.0-GREEN	51200160001 D	50

Accessoires

Figure	Designation	Article Number
	Coding Star CS4-5.0/5.08-RED	Order Data: 50000000026
	Series AKZ1200 with pull relief	Order Data: on request

Ratings

UseGroup	cRU [®] US			VDE	
	B	C	D		
Rated Voltage	300 V	150 V	300 V	250 V	
Rated Current	15 A	15 A	10 A	12 A	
Overtoltage Category				III	
Rated Wire Size				min	max
- solid	AWG 22-12	AWG 22-12	AWG 22-12	0.5 mm ² (5 A)	2.5 mm ² (12 A)
- stranded	AWG 22-12	AWG 22-12	AWG 22-12	0.5 mm ² (5 A)	2.5 mm ² (12 A)
Torque	0.50 Nm	0.50 Nm	0.50 Nm	0.50 Nm	
Screw Size	M2.5	M2.5	M2.5	M2.5	
Test Voltage	1.60 kV	1.30 kV	1.60 kV	4.0 kV	
Pollution Degree				3	