

# TOOLS AND ACCESSORIES

A wide range of accessories is available for the professional use of PTR HARTMANN test probes.

These include receptacle insertion tools for the ICT test probe range and test probes for use in test modules for cable tests. In addition, we offer screwing tools for our series of test probes with thread, also available as torque screwdrivers. A spring force measuring device, especially suitable for use with the push-back probes needed for the cable test, completes this range. This device makes it possible to carry out the necessary monitoring of contact pressures and their constancy.



## Insertion and Extraction Tools

for Test Probes



TEST PROBE TYPE	SMALLEST SPACING mm / mil	TIP STYLE DIAMETER (mm)	INSERTION TOOL	EXTRACTION TOOL
1008/E	1.27 / 50	< 0.5	WFE 1200/1008E	-
1010	1.91 / 75	0.9 ... 1.5*	WFEA 1015	WFEA 1015
1012/E	1.91 / 75	< 0.9	WFEA 1015	Flat-Nose-Pliers
1012/E	1.91 / 75	0.9 ... 2.0*	WFEA 1015	WFEA 1015
1015	2.54 / 100	< 0.9	WFEA 1015	Flat-Nose-Pliers
1015	2.54 / 100	0.9 ... 2.0*	WFEA 1015	WFEA 1015
1021, 2021	2.54 / 100	< 1.2	WFEA 1021	Flat-Nose-Pliers
1021, 2021	2.54 / 100	1.2 ... 2.0*	WFEA 1021	WFEA 1021
1025/E	2.54 / 100	< 1.1	WFEA 1025/E	Flat-Nose-Pliers
1025/E	2.54 / 100	1.1 ... 2.3*	WFEA 1025/E	WFEA 1025/E
1028, 2028	2.54 / 100	< 1.5	WFEA 1028	Flat-Nose-Pliers
1028, 2028	2.54 / 100	1.5 ... 2.0*	WFEA 1028	WFEA 1028
1029, 2029	2.54 / 100	< 1.5	WFEA 1028	Flat-Nose-Pliers
1029, 2029	2.54 / 100	1.5 ... 2.0*	WFEA 1028	WFEA 1028
1030	2.54 / 100	< 1.5	WFEA 1028	Flat-Nose-Pliers
1030	2.54 / 100	1.5 ... 2.0*	WFEA 1028	WFEA 1028
1041	4.00 / 160	< 2.0	WFEA 1050	Flat-Nose-Pliers
1041	4.00 / 160	2.0 ... 3.0*	WFEA 1050	WFEA 1050
1042	4.00 / 160	< 2.0	WFEA 1050	Flat-Nose-Pliers
1042	4.00 / 160	2.0 ... 3.0*	WFEA 1050	WFEA 1050
1050	4.00 / 160	< 2.0	WFEA 1050	Flat-Nose-Pliers
1050	4.00 / 160	2.0 ... 3.0*	WFEA 1050	WFEA 1050
1060	4.00 / 160	< 2.0	WFEA 1050	Flat-Nose-Pliers
1060	4.00 / 160	2.0 ... 3.0*	WFEA 1050	WFEA 1050
2053	2.54 / 100	< 1.5	WFEA 1028	Flat-Nose-Pliers
2053	2.54 / 100	1.5 ... 2.0*	WFEA 1028	WFEA 1028
3010/..	4.00 / 160	< 2.0	WFEA 1050	Flat-Nose-Pliers
3010/..	4.00 / 160	2.0 ... 3.0*	WFEA 1050	WFEA 1050
3020/2	2.54 / 100	< 1.2	WFEA 1021	Flat-Nose-Pliers
3020/2	2.54 / 100	1.2 ... 2.0*	WFEA 1021	WFEA 1021
3026/2W	2.54 / 100	< 1.2	WFEA 1021	Flat-Nose-Pliers
3026/2W	2.54 / 100	1.2 ... 2.0*	WFEA 1021	WFEA 1021
3030	2.54 / 100	< 1.0	WFEA 3030	Flat-Nose-Pliers
3030	2.54 / 100	1.0 ... 2.3*	WFEA 3030	WFEA 3030

\* When to use bigger headdiameters please order for special tools!  
When ordering please mention the test probe type!

RECEPTACLE	SLEEVE INSERTION TOOL	
	COMPLETE	INSERTION
H 1007	WHE 1200/07	WHE 1200/007
H 1008, H1008/E	WHE 1200/08	WHE 1200/008
H 1010	WHE 1200/12	WHE 1200/012
H 1012	WHE 1200/12	WHE 1200/012
H 1015, H 1015/G..	WHE 1200/15	WHE 1200/015
H 1021	WHE 1200/21	WHE 1200/021
H 1021/GV..	WHE 1200/21-V	WHE 1200/021-V
H 1025	WHE 1200/15	WHE 1200/015
H 1030	WHE 1200/30	WHE 1200/030
H 1050	WHE 1200/50	WHE 1200/050
H 1053/GRV, H1053/GVRV	WHE 1200/53-V	WHE 1200/053-V
H 1070	WHE 1200/75	WHE 1200/075
H 1075, H 1075/G-L	WHE 1200/75	WHE 1200/075
H 1080/GR-L, H 1080/GR-M5	WHE 1200/80	WHE 1200/080
H 2021	WHE 1200/21	WHE 1200/021
H 2050	WHE 1200/50	WHE 1200/050
H 3014	WHE 1200/3014	WHE 1200/03014
H 3023	WHE 1200/3023	WHE 1200/03023
H 3024	WHE 1200/3024	WHE 1200/03024
H 3026/W	WHE 1200/21	WHE 1200/21
H 3028/VR.01	WHE 1200/3028-1	WHE 1200/03028-1
H 5104..	WHE 1200/5104	WHE 1200/05104
SK790	WHE 1200/790	WHE 1200/790

RECEPTACLE	SLEEVE EXTRACTION TOOL	
	COMPLETE	INSERTION
H 1008	WHA 1200/08	WHA 1200/008
H 1012	WHA 1200/12	WHA 1200/012
H 1025	WHA 1200/25	WHA 1200/025

RECEPTACLE	SLEEVE INSERTION TOOL COMPLETE	MARKING ON TOOL SHANK
H 1015/G	WHE 137	1 Ring
H 1021	WHE 165	2 Rings
H 1021/G	WHE 165	2 Rings
H 1042	WHE 300	4 Rings
H 1050	WHE 265	3 Rings
H 1060/G	WHE 265	3 Rings
H 2021	WHE 165	2 Rings
H 2050	WHE 265	3 Rings
H 3010, H 3010-22, H 3010/S-23, H 3010/S-28	WHE 265	3 Rings
H 3010/GS, H 3010/GW, H 3010/GW5, H 3010/GWR5	WHE 265	3 Rings
H 3011	WHE 265	3 Rings
H 3020, H 3020/S-26	WHE 165	2 Rings
H 3020/GS-26, H 3020/GRS-26, H 3020/GW5, H 3020/GWR5	WHE 165	2 Rings
H 3023/G, H 3023/5G, H 3023/GWR5	WHE 165	2 Rings

## Receptacle Insertion Tools

Metal Handle Design



## Receptacle Extraction Tools

Metal Handle Design

## Receptacle Insertion Tools

Plastic Handle Design



## Screwing Tools / Screw-In Torques Test Probes with Thread

## Screwing Tools / Screw-In Torques Test Probes with Thread

**IMPORTANT:** If excessive torque is applied, this may destroy the threaded test probe (broken thread, buckling of barrel and/or receptacle, damage to the barrel square-end or screw slot), or it may destroy the screwing tool (cracking/splitting of the square end, damage to the square-end surfaces etc. → loss of grip)

SERIES	SMALLEST CENTER	MAX. HEAD DIAMETER	TOOL TYPE	SCREWING TOOLS (% <sup>1</sup> / <sub>4</sub> " INCH CONNECTION)	RECOMMENDED SCREWING-IN TORQUE	MAXIMUM SCREWING-IN TORQUE
1007/G	1.27	1.0	A	WFSB 1007/G-1.27-1.0	0.5 ... 1.0 Ncm	max. 1.0 Ncm
1010/G	1.50	1.0	A	WFSB 1010/G-1.5-1.0	1.0 Ncm	max. 1.5 Ncm
	2.30	1.5	B	WFSB 1010/G-2.3-1.5-Z	1.0 Ncm	max. 1.5 Ncm
1012/G	1.50	1.0	A	WFSB 1012/G-1.5-1.0	0.5 ... 1.0 Ncm	max. 1.0 Ncm
	1.90	1.5	B	WFSB 1012/G-1.9-1.5-Z	0.5 ... 1.0 Ncm	max. 1.0 Ncm
1015/G	2.54	1.5	A	WFSB 1015/G-2.54-1.5	2.0 Ncm	max. 3.0 Ncm
	2.54	1.8	A	WFSB 1015/G-2.54-1.8	2.0 Ncm	max. 3.0 Ncm
1021/G, 1021/GV	2.54	1.8	A	WFSB 1021/G-2.54-1.8	3.0 Ncm	max. 5.0 Ncm
	2.54	2.0	A	WFSB 1021/G-2.54-2.0	3.0 Ncm	max. 5.0 Ncm
	3.00	2.5	B	WFSB 1021/G-C2S-3.0-2.5-Z	3.0 Ncm	max. 5.0 Ncm
	3.50	3.0	B	WFSB 1021/G-3.5-3.0-Z	2.0 Ncm	max. 3.0 Ncm
1021/G-D19xx, F19xx	2.54	1.5	C	WFSB 1021/G-2.54-1.5-SW	2.0 Ncm	max. 3.0 Ncm
	3.00	1.5	C	WFSB 1021/G-3.0-1.5-SW	3.0 Ncm	max. 5.0 Ncm
1021/GT-D17xx, F17xx	Plate-∅ ≥ 2.1	1.5	F	WFSB 1021/GT-1	3.0 Ncm	max. 5.0 Ncm
	Plate-∅ ≥ 2.8	1.6 - 2.2	F	WFSB 1021/GT-2	3.0 Ncm	max. 5.0 Ncm
1024/G, 1028/G	2.54	1.8	A	WFSB 1021/G-2.54-1.8	3.0 Ncm	max. 5.0 Ncm
	2.54	2.0	A	WFSB 1021/G-2.54-2.0	3.0 Ncm	max. 5.0 Ncm
	3.00	2.5	B	WFSB 1021/G-C2S-3.0-2.5-Z	3.0 Ncm	max. 5.0 Ncm
	3.50	3.0	B	WFSB 1021/G-3.5-3.0-Z	2.0 Ncm	max. 3.0 Ncm
1042/G	all	all	D	WFSB 3012/G-S1.8	4.0 Ncm	max. 15.0 Ncm
1053/G	5.00	4.0	B	WFSB 1053/G-5.0-4.0-Z	4.0 Ncm	max. 7.0 Ncm
	6.00	5.0	B	WFSB 1053/G-6.0-5.0-Z	4.0 Ncm	max. 7.0 Ncm
1060/G	4.00	3.0	A	WFSB 1060/G-4.0-3.0	4.0 Ncm	max. 15.0 Ncm
	5.00	4.0	B	WFSB 1060/G-5.0-4.0-Z	4.0 Ncm	max. 15.0 Ncm
	6.00	5.0	B	WFSB 1060/G-6.0-5.0-Z	4.0 Ncm	max. 15.0 Ncm
1060/G-D19xx, F19xx	4.00	2.3	C	WFSB 1060/G-4.0-2.3-SW	3.0 Ncm	max. 5.0 Ncm
1060/GT-F16xx	Plate-∅ ≥ 3.5	from 3.3	F	WFSB 1021/GT-1	3.0 Ncm	max. 5.0 Ncm
1060/GT-D17xx, F17xx	Plate-∅ ≥ 2.1	1.5	F	WFSB 1021/GT-1	3.0 Ncm	max. 5.0 Ncm
	Plate-∅ ≥ 2.8	2.2	F	WFSB 1021/GT-1	3.0 Ncm	max. 5.0 Ncm
1060/GT-D17xx, F17xx	Plate-∅ ≥ 4.0	<b>3.3</b>	<b>F</b>	WFSB 1060/GT	3.0 Ncm	max. 5.0 Ncm
	1061/G	4.00	3.0	A	WFSB 1060/G-4.0-3.0	4.0 Ncm
1075/G	5.00	4.0	A	WFSB 1070/G-5.0-4.0	5.0 Ncm	max. 15.0 Ncm
1078/G	7.00	5.0	A	WFSB 3015/G-7.0	5.0 Ncm	max. 15.0 Ncm
1080/G	7.60	6.0		Standard Socket - Wrench 6.0 mm		
3010/2G	4.00	3.0	A	WFSB 1060/G-4.0-3.0	4.0 Ncm	max. 15.0 Ncm
	5.00	4.0	B	WFSB 1060/G-5.0-4.0-Z	4.0 Ncm	max. 15.0 Ncm
	6.00	5.0	B	WFSB 1060/G-6.0-5.0-Z	4.0 Ncm	max. 15.0 Ncm
3010/2G5	4.00	3.0	A	WFSB 1060/G-4.0-3.0	4.0 Ncm	max. 15.0 Ncm
	5.00	4.0	B	WFSB 1060/G-5.0-4.0-Z	4.0 Ncm	max. 15.0 Ncm
3010/2GW	4.00	3.0	A	WFSB 1060/G-4.0-3.0	4.0 Ncm	max. 15.0 Ncm
	5.00	4.0	B	WFSB 1060/G-5.0-4.0-Z	4.0 Ncm	max. 15.0 Ncm
3010/2GW5	4.00	3.0	A	WFSB 1060/G-4.0-3.0	4.0 Ncm	max. 15.0 Ncm
	5.00	4.0	B	WFSB 1060/G-5.0-4.0-Z	4.0 Ncm	max. 15.0 Ncm
3010/10G	4.00	3.0	A	WFSB 1060/G-4.0-3.0	4.0 Ncm	max. 15.0 Ncm
	5.00	4.0	B	WFSB 1060/G-5.0-4.0-Z	4.0 Ncm	max. 15.0 Ncm
3010/10G	4.00	3.0	A	WFSB 1060/G-4.0-3.0	4.0 Ncm	max. 15.0 Ncm
	5.00	4.0	B	WFSB 1060/G-5.0-4.0-Z	4.0 Ncm	max. 15.0 Ncm

SERIES	SMALLEST CENTER	MAX. HEAD DIAMETER	TOOL TYPE	SCREWING TOOLS (% <sup>1</sup> / <sub>4</sub> " INCH CONNECTION)	RECOMMENDED SCREWING-IN TORQUE	MAXIMUM SCREWING-IN TORQUE
3011/2GS, 3011/2FGS	4.00	3.0	A	WFSB 1060/G-4.0-3.0	4.0 Ncm	max. 15.0 Ncm
	5.00	4.0	B	WFSB 1060/G-5.0-4.0-Z	4.0 Ncm	max. 15.0 Ncm
	6.00	5.0	B	WFSB 1060/G-6.0-5.0-Z	4.0 Ncm	max. 15.0 Ncm
3012/2GS	all	all	D	WFSB 3012/G-S1.8	4.0 Ncm	max. 7.0 Ncm
3012/2GSL (Plungers with Pins)	all	all	D	WFSB 3012/G-S1.8	4.0 Ncm	max. 7.0 Ncm
3012/2GSL (Plungers without Pins)	4.00	2.6	A	WFSB 3012-4.0-2.6	4.0 Ncm	max. 7.0 Ncm
3014/2G	4.00	3.0	A	WFSB 1060/G-4.0-3.0	4.0 Ncm	max. 15.0 Ncm
	5.00	4.0	B	WFSB 1060/G-5.0-4.0-Z	4.0 Ncm	max. 15.0 Ncm
	6.00	5.0	B	WFSB 1060/G-6.0-5.0-Z	4.0 Ncm	max. 15.0 Ncm
3015/G	7.00	5.0	A	WFSB 3015/G-7.0	5.0 Ncm	max. 15.0 Ncm
	2.54	1.8	A	WFSB 1021/G-2.54-1.8	3.0 Ncm	max. 5.0 Ncm
3020/2G, 3020/2GW5	2.54	2.0	A	WFSB 1021/G-2.54-2.0	3.0 Ncm	max. 5.0 Ncm
	3.00	2.5	B	WFSB 1021/G-C2S-3.0-2.5-Z	3.0 Ncm	max. 5.0 Ncm
	3.50	3.0	B	WFSB 1021/G-3.5-3.0-Z	2.0 Ncm	max. 3.0 Ncm
3023/2GS	2.54	1.8	A	WFSB 1021/G-2.54-1.8	3.0 Ncm	max. 5.0 Ncm
	2.54	2.0	A	WFSB 1021/G-2.54-2.0	3.0 Ncm	max. 5.0 Ncm
	3.00	2.5	B	WFSB 1021/G-C2S-3.0-2.5-Z	3.0 Ncm	max. 5.0 Ncm
	3.50	3.0	B	WFSB 1021/G-3.5-3.0-Z	2.0 Ncm	max. 3.0 Ncm
	2.54	1.8	A	WFSB 1021/G-2.54-1.8	3.0 Ncm	max. 5.0 Ncm
3024/2G	2.54	2.0	A	WFSB 1021/G-2.54-2.0	3.0 Ncm	max. 5.0 Ncm
	3.00	2.5	B	WFSB 1021/G-C2S-3.0-2.5-Z	3.0 Ncm	max. 5.0 Ncm
	3.50	3.0	B	WFSB 1021/G-3.5-3.0-Z	2.0 Ncm	max. 3.0 Ncm
3028.01	2.54	1.8	A	WFSB 1021/G-2.54-1.8	3.0 Ncm	max. 5.0 Ncm
	2.54	2.0	A	WFSB 1021/G-2.54-2.0	3.0 Ncm	max. 5.0 Ncm
	3.00	2.5	B	WFSB 1021/G-C2S-3.0-2.5-Z	3.0 Ncm	max. 5.0 Ncm
3030/GW3	3.50	3.0	B	WFSB 1021/G-3.5-3.0-Z	2.0 Ncm	max. 3.0 Ncm
	2.54	1.5	A	WFSB 1015/G-2.54-1.5	2.0 Ncm	max. 3.0 Ncm
3035/GW	2.54	1.8	A	WFSB 1015/G-2.54-1.8	2.0 Ncm	max. 3.0 Ncm
	1.50	1.0	A	WFSB 1012/G-1.5-1.0	0.5 ... 1.0 Ncm	max. 1.0 Ncm
3212/2GS (Plungers with Pins)	1.90	1.5	B	WFSB 1012/G-1.9-1.5-Z	0.5 ... 1.0 Ncm	max. 1.0 Ncm
	all	all	D	WFSB 3012/G-S1.8	4.0 Ncm	max. 7.0 Ncm
3212/2GS (Plungers without Pins)	4.00	2.6	A	WFSB 3012-4.0-2.6	4.0 Ncm	max. 7.0 Ncm
4004/G	4.00	3.0	A	WFSB 1060/G-4.0-3.0	4.0 Ncm	max. 15.0 Ncm
	5.00	4.0	B	WFSB 1060/G-5.0-4.0-Z	4.0 Ncm	max. 15.0 Ncm
5104	6.00	5.0	B	WFSB 1060/G-6.0-5.0-Z	4.0 Ncm	max. 15.0 Ncm
	4.00	3.0	A	WFSB 1060/G-4.0-3.0	4.0 Ncm	max. 15.0 Ncm
5110/G	5.00	4.0	B	WFSB 1060/G-5.0-4.0-Z	4.0 Ncm	max. 15.0 Ncm
	6.00	5.0	B	WFSB 1060/G-6.0-5.0-Z	4.0 Ncm	max. 15.0 Ncm
5203	2.54	2.0	A	WFSB 5203-2.54-2.0	3.0 Ncm	max. 5.0 Ncm
	3.50	2.7	B	WFSB 5203-3.5-2.7-Z	3.0 Ncm	max. 5.0 Ncm

**A** – closed square-head | **B** – claw (only for two-line assembly) | **D** – screwdriver for slotted screws | **E** – hexagon socket key | **F** – three point wrench  
Other tools on request! When ordering tools, please specify the test probe to be assembled!

## Screwing Tools / Screw-In Torques Test Probes with Thread

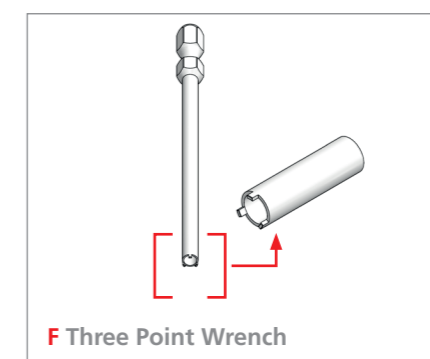
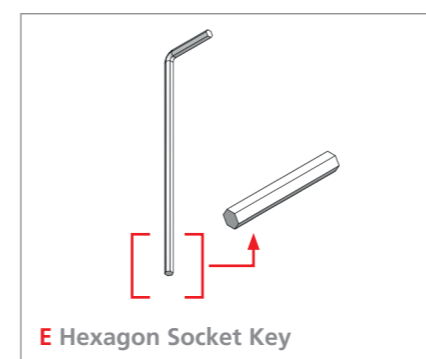
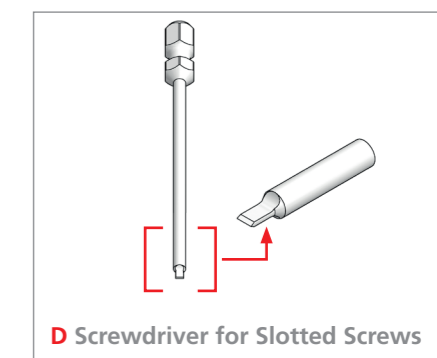
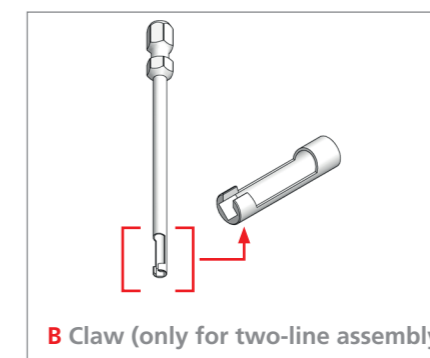
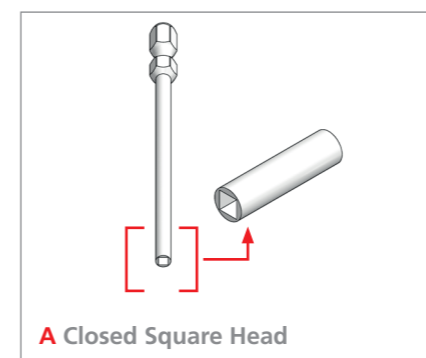
**IMPORTANT:** If excessive torque is applied, this may destroy the threaded test probe (broken thread, buckling of barrel and/or receptacle, damage to the barrel square-end or screw slot), or it may destroy the screwing tool (cracking/splitting of the square end, damage to the square-end surfaces etc. → loss of grip)

SERIES	SMALLEST CENTER	MAX. HEAD DIAMETER	TOOL TYPE	SCREWING TOOLS (¼" INCH CONNECTION)	RECOMMENDED SCREWING-IN TORQUE	MAXIMUM SCREWING-IN TORQUE
5207/G	all	all	E	Hexagon Socket Key 2 mm	4.0 Ncm	max. 15.0 Ncm
5248/G	2.5	2.0	A	WFSB 5248/G-2,54-2,0	3.0 Ncm	max. 5.0 Ncm
5257/G	2.54	1.8	A	WFSB 1021/G-2.54-1.8	3.0 Ncm	max. 5.0 Ncm
	2.54	2.0	A	WFSB 1021/G-2.54-2.0	3.0 Ncm	max. 5.0 Ncm
	3.00	2.5	B	WFSB 1021/G-C25-3.0-2.5-Z	3.0 Ncm	max. 5.0 Ncm
5257/G	3.50	3.0	B	WFSB 1021/G-3.5-3.0-Z	2.0 Ncm	max. 3.0 Ncm
	3.00	2.3	A	WFSB 5265-3.0-2.3	3.0 Ncm	max. 5.0 Ncm
5265	3.00	2.5	B	WFSB 5265-3.0-2.5-Z	3.0 Ncm	max. 5.0 Ncm
	3.50	3.0	B	WFSB 5265-3.5-3.0-Z	3.0 Ncm	max. 5.0 Ncm
5310/G	2.54	1.8	A	WFSB 1021/G-2.54-1.8	3.0 Ncm	max. 5.0 Ncm
	2.54	2.0	A	WFSB 1021/G-2.54-2.0	3.0 Ncm	max. 5.0 Ncm
7840/G	/	8.0	B	WFS 7840/G-8.0	5.0 Ncm	max. 8.0 Ncm
7860/G	/	8.0	B	WFS 7860/G-8.0	5.0 Ncm	max. 8.0 Ncm

## Screwing Tools for Test Probes with Thread

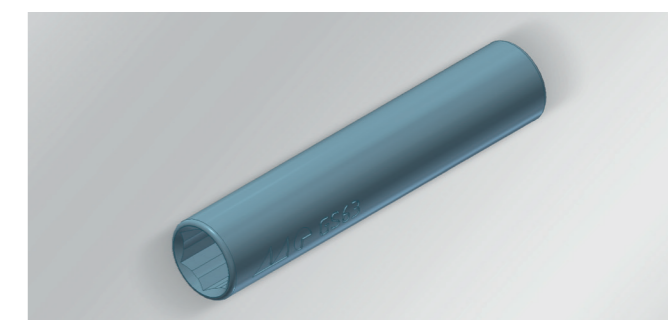
### Screwing Tools for Test Probes with Thread

Tool Type with ¼" Inch Connection



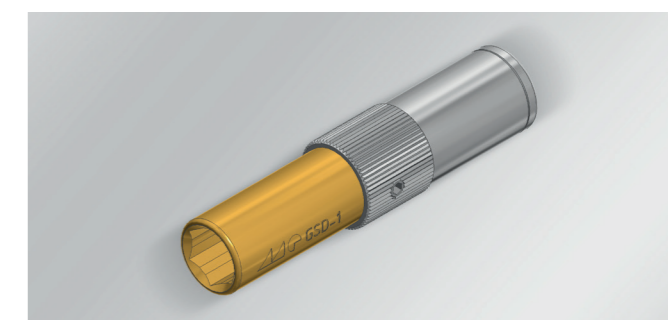
### Screwing Tool without Torque Limit GS 63

Tool Reception ¼" Inch



### Screwing Tool with Torque Limit (Ratchet) GSD-x

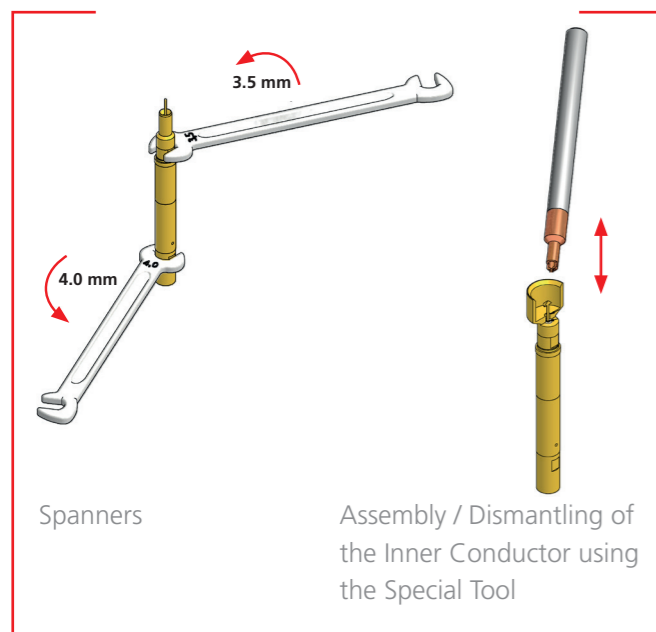
Tool Reception ¼" Inch



TYPE	COLOUR CODE	SECTOR
GSD-1	gold	1 Ncm
GSD-2	green	2 Ncm
GSD-3	blue	3 Ncm
GSD-4	red	4 Ncm

A – closed square-head | B – claw (only for two-line assembly) | D – screwdriver for slotted screws | E – hexagon socket key | F – three point wrench  
Other tools on request! When ordering tools, please specify the test probe to be assembled!

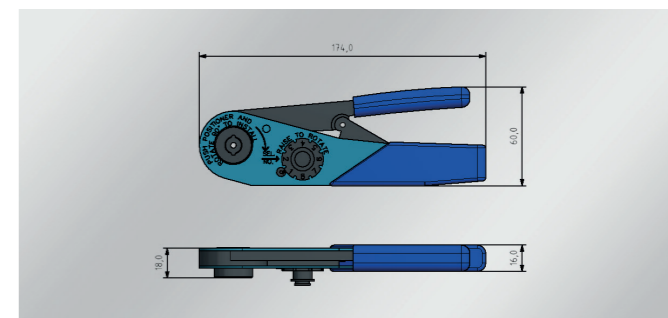
### Assembly Tools for High Frequency Test Probe



SERIES	MAX. HEAD DIAMETER	TOOL TYPE
7840(G) / 7860(G)	0.5	WFK 7860-i-05
7840(G) / 7860(G)	1.8	WFK 7860-i-18
7840(G) / 7860(G)		SW 3.5
7840(G) / 7860(G)		SW 4.0
7890		SW 2.5
7890		SW 3.0

HIGHLIGHTS	
4 point crimping	
For receptacles	
Crimping capacities adjustable	
SPECIFICATIONS	
Wire Size	0.09 - 0.82 mm <sup>2</sup>
AWG	32 - 20
Weight	332,75 g

### Crimp Tool AFM8



### Torque Screwdriver



TYPE	PRESET TORQUE
DMS 1	1 Ncm
DMS 2	2 Ncm
DMS 3	3 Ncm
DMS 4	4 Ncm

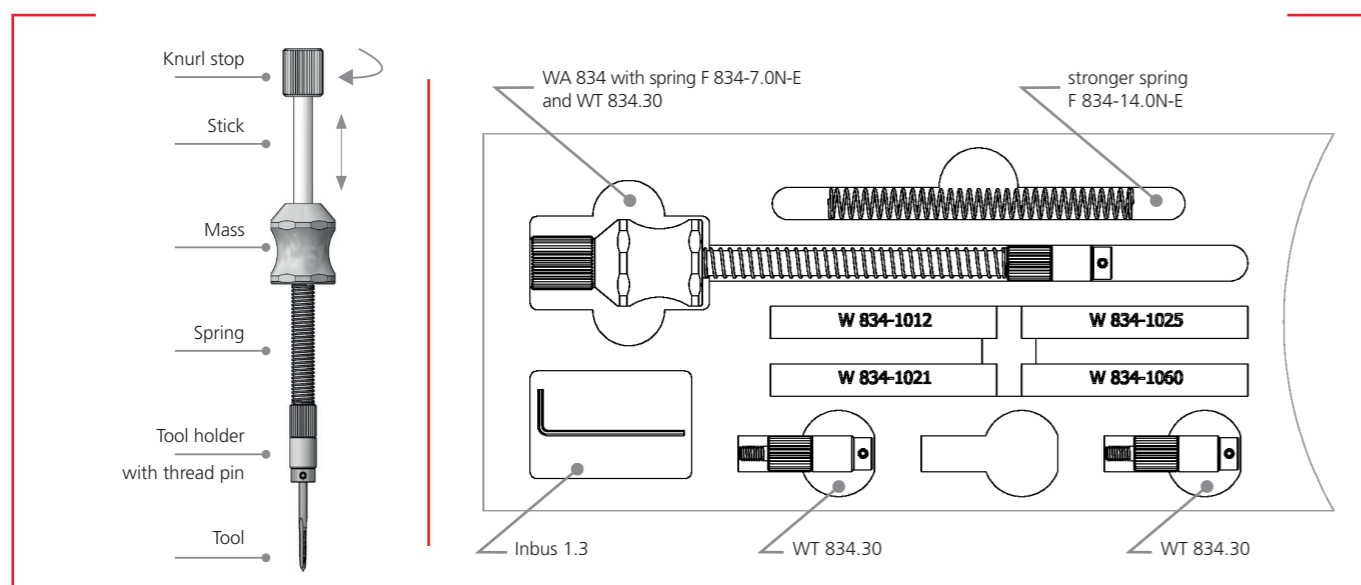
### Tool Changing WA 834 for Mounting Receptacles



CONTENT
Basic tool WA 834 with standard spring F 834-7.0N-E
Standard spring can be replaced with the stronger spring F 834-14.0N-E

SPECIFICATIONS	
Measuring range	0 ... 50 N
Resolution	0,01 N
Pressure calibration	0,1 Mpa
Load cell	Integrated load cell with M6 connection
Measuring range	1 ... 100 % of the full scale
Measurement accuracy	± 0,5 %
Units	N, kg, lb
Display	LCD
Display Orientation	0° / 180°
Power supply	Internal battery, 12V / 1 A power adapter
Operating temperature	+10 ... +30 °C / 50 ... 86°F
Relative humidity	15 ... 80 % relative humidity
Weight	1 kg / 2.2 lbs
Interface	USB

### Digital Force Gauge FKT50



DIMENSION		
Ø A (mm)	Ø B (mm)	CENTER (mm)
2.1	1.6	2.54
2.6	2.1	2.54
3.6	3.1	4.0
4.6	4.1	5.0
5.6	5.1	6.0

