



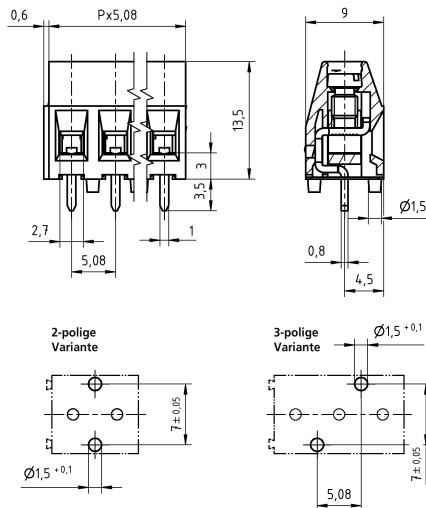
Technical Data

Wire sizes		Insulating Material	
Solid min	0.14 mm ²	Material	PPA
Solid max	2.5 mm ²	Flammability Class	UL 94 V-0
Stranded (flexible) min	0.14mm ²	Temperatures	
Stranded (flexible) max	1.5 mm ²	Operating Temperature (without mech. load)	-40 °C - 105 °C
Stranded with Ferrule min	0.25 mm ²	Store Temperature	-40 °C - 105 °C
Stranded with Ferrule max	1.5 mm ²	Wave Soldering Process	
Dimensions		Soldering Temperature, recommended	260 °C
Stripped Length	6.0 mm	Peak Soldering Time, recommended	3-4 s
PCB Hole Diameter	1.3 mm	Reflow Process	
Materials		Soldering Temperature, recommended	217 - 245 °C
Clamp	Brass	Peak Soldering Time, recommended	60 s
Screw	Steel		
Solder Tab	Brass		

Colours

BLACK, RAL 9011

Colours according to RAL, there may be variations on colour due to production conditions.



Order Data (Spacing 5.08 mm)

Poles	Width (mm)	Article Designation	Article Number	PU
2	10.76	AKZ350/2-5.08-V-P3.5-BK-FP-HT	50350020937 F	200
3	15.84	AKZ350/3-5.08-V-P3.5-BK-FP-HT	50350030937 F	200
4	20.92	AKZ350/4-5.08-V-P3.5-BK-FP-HT	50350040937 F	200
5	26.00	AKZ350/5-5.08-V-P3.5-BK-FP-HT	50350050937 F	200
6	31.08	AKZ350/6-5.08-V-P3.5-BK-FP-HT	50350060937 E	100
7	36.16	AKZ350/7-5.08-V-P3.5-BK-FP-HT	50350070937 E	100
8	41.24	AKZ350/8-5.08-V-P3.5-BK-FP-HT	50350080937 E	100
9	46.32	AKZ350/9-5.08-V-P3.5-BK-FP-HT	50350090937 E	100
10	51.40	AKZ350/10-5.08-V-P3.5-BK-FP-HT	50350100937 E	100
11	56.48	AKZ350/11-5.08-V-P3.5-BK-FP-HT	50350110937 D	50
12	61.56	AKZ350/12-5.08-V-P3.5-BK-FP-HT	50350120937 D	50

Accessoires

Figure	Designation	Article Number
	Bridge, 2-pole, insulated, BRI/2-5.0/5.08-LIGHT GREY	Order Data: 50000000006
	Bridge, 3-pole, insulated, BRI/3-5.0/5.08-LIGHT GREY	Order Data: 50000000007
	Bridge, 2-pole, BR/2-5.0/5.08-L7.0	Order Data: 50000000008

The insulated bridges have to be mounted after the reflow soldering process.

Ratings

UseGroup	cRU [®] US			VDE	
	B	C	D		
Rated Voltage	300 V	150 V	300 V	250 V	
Rated Current	15 A	15 A	10 A	17.5 A	
Rated Wire Size				min	max
- solid	AWG 22-12	AWG 22-12	AWG 22-12	0.5 mm ²	2.5 mm ²
- stranded	AWG 22-12	AWG 22-12	AWG 22-12	0.5 mm ²	1.5 mm ²
Torque	0.50 Nm	0.50 Nm	0.50 Nm	0.50 Nm	
Screw Size	M3	M3	M3	M3	
Test Voltage	1.60 kV	1.30 kV	1.60 kV	2.0 kV	