



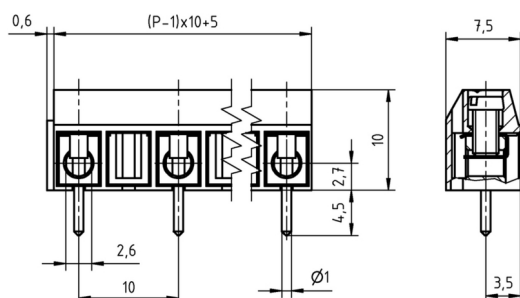
### Technical Data

Wire sizes		Insulating Material	
Solid min	0.2 mm <sup>2</sup>	Material	PA 6.6
Solid max	1.5 mm <sup>2</sup>	Flammability Class	UL 94 V-0
Stranded (flexible) min	0.2mm <sup>2</sup>	<b>Temperatures</b>	
Stranded (flexible) max	1.5 mm <sup>2</sup>	Operating Temperature (without mech. load)	-40 °C - 105 °C
Stranded with Ferrule min	0.2 mm <sup>2</sup>	Store Temperature	-40 °C - 105 °C
Stranded with Ferrule max	1.5 mm <sup>2</sup>	<b>Wave Soldering Process</b>	
<b>Dimensions</b>		Soldering Temperature, recommended	260 °C
Stripped Length	5.0 mm	Peak Soldering Time, recommended	3-4 s
PCB Hole Diameter	1.3 mm	<b>Reflow Process</b>	
<b>Materials</b>		Soldering Temperature, recommended	-
Clamp	Brass	Peak Soldering Time, recommended	-
Wire Guard	Stainless Steel		
Screw	Steel		

### Colours

	GREY, RAL 7016
	BLACK, RAL 9011
	GREEN, RAL 6018
	BLUE, RAL 5015

Colours according to RAL, there may be variations on colour due to production conditions. Special colours on request.



### Order Data (Spacing 10.0 mm)

Poles	Width (mm)	Article Designation	Article Number	PU
2	15.60	AK500/2DS-10.0-V-GREY	50500020211 G	250
3	25.60	AK500/3DS-10.0-V-GREY	50500030211 G	250
4	35.60	AK500/4DS-10.0-V-GREY	50500040211 G	250
5	45.60	AK500/5DS-10.0-V-GREY	50500050211 E	100
6	55.60	AK500/6DS-10.0-V-GREY	50500060211 E	100
7	65.60	AK500/7DS-10.0-V-GREY	50500070211 D	50
8	75.60	AK500/8DS-10.0-V-GREY	50500080211 D	50
9	85.60	AK500/9DS-10.0-V-GREY	50500090211 D	50
10	95.60	AK500/10DS-10.0-V-GREY	50500100211 D	50
11	105.60	AK500/11DS-10.0-V-GREY	50500110211 D	50
12	115.60	AK500/12DS-10.0-V-GREY	50500120211 D	50

### Ratings

UseGroup	cRU <sup>®</sup> US			VDE	
	B	C	D		
Rated Voltage	300 V	150 V	300 V	1.000 V	
Rated Current	15 A	15 A	10 A	17.5 A	
Rated Wire Size				min	max
- solid	AWG 22-14	AWG 22-14	AWG 22-14	0.5 mm <sup>2</sup>	1.5 mm <sup>2</sup>
- stranded	AWG 22-14	AWG 22-14	AWG 22-14	0.5 mm <sup>2</sup>	1.5 mm <sup>2</sup>
Torque	0.40 Nm	0.40 Nm	0.40 Nm	0.40 Nm	
Screw Size	M2.6	M2.6	M2.6	M2.6	
Test Voltage	1.60 kV	1.30 kV	1.60 kV	3.5 kV	