

AK100/..DS-10.0-H-GREY-BL



A Phoenix Mecano Brand

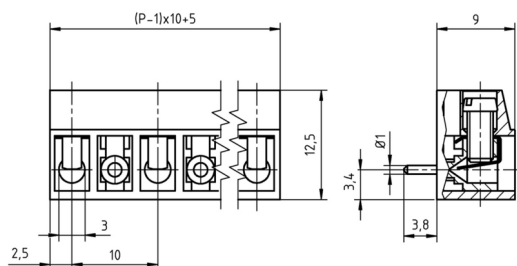
Technical Data

| Wire sizes | | Insulating Material | |
|---------------------------|---------------------|--|-----------------|
| Solid min | 0.2 mm ² | Material | PA 6.6 |
| Solid max | 2.5 mm ² | Flammability Class | UL 94 V-0 |
| Stranded (flexible) min | 0.2mm ² | Temperatures | |
| Stranded (flexible) max | 2.5 mm ² | Operating Temperature (without mech. load) | -40 °C - 105 °C |
| Stranded with Ferrule min | 0.2 mm ² | Store Temperature | -40 °C - 105 °C |
| Stranded with Ferrule max | 2.5 mm ² | Wave Soldering Process | |
| Dimensions | | Soldering Temperature, recommended | 260 °C |
| Stripped Length | 6.0 mm | Peak Soldering Time, recommended | 3-4 s |
| PCB Hole Diameter | 1.3 mm | Reflow Process | |
| Materials | | Soldering Temperature, recommended | - |
| Clamp | Brass | Peak Soldering Time, recommended | - |
| Wire Guard | Stainless Steel | | |
| Screw | Steel | | |

Colours

GREY, RAL 7016

Colours according to RAL, there may be variations on colour due to production conditions. Special colours on request.



Order Data (Spacing 10.0 mm)

| Poles | Width (mm) | Article Designation | Article Number | PU |
|-------|------------|--------------------------|----------------|-----|
| 2 | 15.00 | AK100/2DS-10.0-H-GREY-BL | 50100022240 G | 250 |
| 3 | 25.00 | AK100/3DS-10.0-H-GREY-BL | 50100032240 G | 250 |
| 4 | 35.00 | AK100/4DS-10.0-H-GREY-BL | 50100042240 F | 200 |
| 5 | 45.00 | AK100/5DS-10.0-H-GREY-BL | 50100052240 E | 100 |
| 6 | 55.00 | AK100/6DS-10.0-H-GREY-BL | 50100062240 E | 100 |

Ratings



| UseGroup | B | C | D | | |
|-----------------|-----------|-----------|-----------|---------------------|---------------------|
| Rated Voltage | 300 V | 150 V | 300 V | 1.000 V | |
| Rated Current | 20 A | 20 A | 10 A | 24 A | |
| Rated Wire Size | | | | min | max |
| - solid | AWG 22-12 | AWG 22-12 | AWG 22-12 | 0.5 mm ² | 2.5 mm ² |
| - stranded | AWG 22-12 | AWG 22-12 | AWG 22-12 | 0.5 mm ² | 2.5 mm ² |
| Torque | 0.45 Nm | 0.45 Nm | 0.45 Nm | 0.50 Nm | |
| Screw Size | M3 | M3 | M3 | M3 | |
| Test Voltage | 1.60 kV | 1.30 kV | 1.60 kV | 3.5 kV | |