

# AK4200/..-7.5-V-BAGY

- 2 to n poles



A Phoenix Mecano Brand

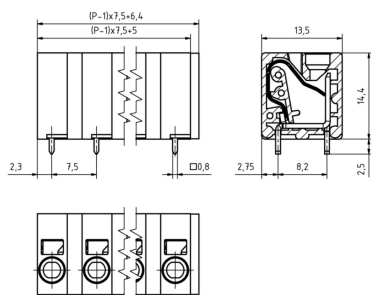
## Technical Data

Wire sizes		Insulating Material	
Solid min	0.2 mm <sup>2</sup>	Material	PA 6.6
Solid max	4.0 mm <sup>2</sup>	Flammability Class	UL 94 V-0
Stranded (flexible) min	0.2mm <sup>2</sup>	<b>Temperatures</b>	
Stranded (flexible) max	2.5 mm <sup>2</sup>	Operating Temperature (without mech. load)	-40 °C - 105 °C
Stranded with Ferrule min	0.2 mm <sup>2</sup>	Store Temperature	-40 °C - 105 °C
Stranded with Ferrule max	2.5 mm <sup>2</sup>	<b>Wave Soldering Process</b>	
<b>Dimensions</b>		Soldering Temperature, recommended	260 °C
Stripped Length	10.0 mm	Peak Soldering Time, recommended	3-4 s
PCB Hole Diameter	1.1 mm	<b>Reflow Process</b>	
<b>Materials</b>		Soldering Temperature, recommended	-
Solder Tab	Copper Alloy	Peak Soldering Time, recommended	-
Clamp Spring	Stainless Steel		

## Colours

	BASALT GREY, RAL 7012
	LIGHT GREY, RAL 7035
	TRAFFIC GREY, RAL 7042
	BLACK, RAL 9011
	LIGHT GREEN, similar RAL 6018
	GREEN, RAL 6018
	GREEN/YELLOW, RAL 6018 - 1018/S
	RED, RAL 3003
	ORANGE, RAL 2011
	BLUE, RAL 5015
	WHITE, RAL 9003

Colours according to RAL, there may be variations on colour due to production conditions. Special colours on request.



## Order Data (Spacing 7.5 mm)

Poles	Width (mm)	Article Designation	Article Number	PU
2	13.90	AK4200/2-7.5-V-baGY	54200020521 D	50
3	21.40	AK4200/3-7.5-V-baGY	54200030521 D	50
4	28.90	AK4200/4-7.5-V-baGY	54200040521 D	50
5	36.40	AK4200/5-7.5-V-baGY	54200050521 D	50
6	43.90	AK4200/6-7.5-V-baGY	54200060521 D	50
7	51.40	AK4200/7-7.5-V-baGY	54200070521 D	50
8	58.90	AK4200/8-7.5-V-baGY	54200080521 D	50
9	66.40	AK4200/9-7.5-V-baGY	54200090521 D	50
10	73.90	AK4200/10-7.5-V-baGY	54200100521 D	50
11	81.40	AK4200/11-7.5-V-baGY	54200110521 D	50
12	88.90	AK4200/12-7.5-V-baGY	54200120521 D	50

## Accessoires

Figure	Designation	Article Number
	Spacer SPC-AK4200-baGY	Order Data: 54200000000
	Side Wall with Coding Pin SW-AK4200-CP-V-baGY	Order Data: 54200000001

## Ratings

UseGroup	C <sup>RU</sup> US			VDE	
	B	C	D		
Rated Voltage	300 V	150 V	300 V	250 V	
Rated Current	20 A	20 A	10 A	24 A	
Overtoltage Category				III	
Rated Wire Size				min	max
	- solid	AWG 24-12	AWG 24-12	AWG 24-12	0.2 mm <sup>2</sup> / 2.5 mm <sup>2</sup>
	- stranded	AWG 24-12	AWG 24-12	AWG 24-12	0.2 mm <sup>2</sup> / 2.5 mm <sup>2</sup>
Test Voltage	1.60 kV	1.30 kV	1.60 kV	3.0 kV	