

AK1200/..F-5.0-GREEN

- 17 to 24 poles on request



A Phoenix Mecano Brand



Technical Data

Wire sizes		Insulating Material	
Solid min	0.2 mm ²	Material	PA 6.6
Solid max	4.0 mm ²	Flammability Class	UL 94 V-0
Stranded (flexible) min	0.2mm ²	Temperatures	
Stranded (flexible) max	2.5 mm ²	Operating Temperature (without mech. load)	-40 °C - 105 °C
Stranded with Ferrule min	0.25 mm ²	Store Temperature	-40 °C - 105 °C
Stranded with Ferrule max	2.5 mm ²	Wave Soldering Process	
Dimensions		Soldering Temperature, recommended	-
Stripped Length	10.0 mm	Peak Soldering Time, recommended	-
Materials		Reflow Process	
Screw	Steel	Soldering Temperature, recommended	-
Contact Spring	Bronze	Peak Soldering Time, recommended	-
Clamp Cage	Steel		
Excenter	Steel		

Colours

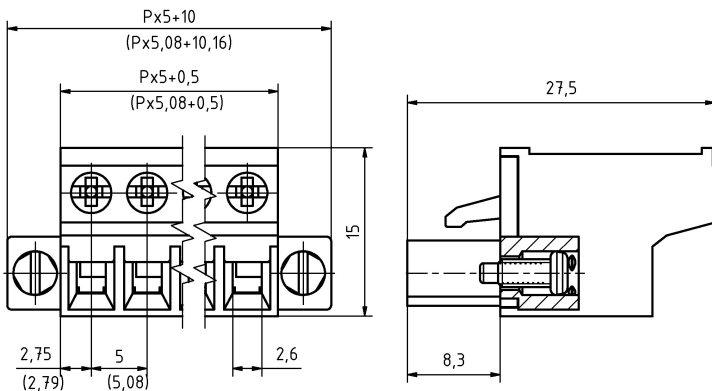
- GREEN, RAL 6018
- LIGHT GREEN, similar RAL 6018

Colours according to RAL, there may be variations on colour due to production conditions. Special colours on request.

Counterparts (Spacing 5.0 mm)

Pin Strip	
STL950	STL950-HT

In combination of connectors with different admission data, the lower value is valid.



Order Data (Spacing 5.0 mm)

Poles	Width (mm)	Article Designation	Article Number	PU
2	10.08	AK1200/2F-5.0-GREEN	51200022001 D	50
3	15.08	AK1200/3F-5.0-GREEN	51200032001 D	50
4	20.08	AK1200/4F-5.0-GREEN	51200042001 D	50
5	25.08	AK1200/5F-5.0-GREEN	51200052001 D	50
6	30.08	AK1200/6F-5.0-GREEN	51200062001 D	50
7	35.08	AK1200/7F-5.0-GREEN	51200072001 D	50
8	40.08	AK1200/8F-5.0-GREEN	51200082001 D	50
9	45.08	AK1200/9F-5.0-GREEN	51200092001 D	50
10	50.08	AK1200/10F-5.0-GREEN	51200102001 D	50
11	55.08	AK1200/11F-5.0-GREEN	51200112001 D	50
12	60.08	AK1200/12F-5.0-GREEN	51200122001 D	50
13	65.08	AK1200/13F-5.0-GREEN	51200132001 D	50
14	70.08	AK1200/14F-5.0-GREEN	51200142001 D	50
15	75.08	AK1200/15F-5.0-GREEN	51200152001 D	50
16	80.08	AK1200/16F-5.0-GREEN	51200162001 D	50

Accessoires

Figure	Designation	Article Number
	Coding Star CS4-5.0/5.08-RED	Order Data: 50000000026
	Series AKZ1200 with pull relief	Order Data: on request

Ratings

UseGroup	cRU [®] US			VDE	
	B	C	D		
Rated Voltage	300 V	150 V	300 V	250 V	
Rated Current	15 A	15 A	10 A	12 A	
Overvoltage Category				III	
Rated Wire Size				min	max
	- solid	AWG 22-12	AWG 22-12	AWG 22-12	0.2 mm ² (4 A) / 2.5 mm ² (12 A)
	- stranded	AWG 22-12	AWG 22-12	AWG 22-12	0.2 mm ² (4 A) / 2.5 mm ² (12 A)
Torque	0.50 Nm	0.50 Nm	0.50 Nm	0.50 Nm	
Screw Size	M2.5	M2.5	M2.5	M2.5	
Test Voltage	1.60 kV	1.30 kV	1.60 kV	4.0 kV	
Pollution Degree				3	