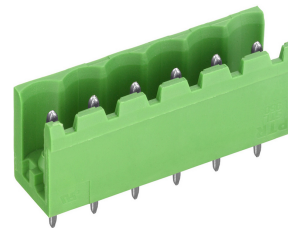


# STL950/..-5.0-V-GREEN



A Phoenix Mecano Brand



## Technical Data

Wire sizes		Insulating Material	
Solid min	-	Material	PA 6.6
Solid max	-	Flammability Class	UL 94 V-0
Stranded (flexible) min	-	<b>Temperatures</b>	
Stranded (flexible) max	-	Operating Temperature (without mech. load)	-40 °C - 105 °C
Stranded with Ferrule min	-	Store Temperature	-40 °C - 105 °C
Stranded with Ferrule max	-	<b>Wave Soldering Process</b>	
<b>Dimensions</b>		Soldering Temperature, recommended	260 °C
PCB Hole Diameter	1.4 mm	Peak Soldering Time, recommended	3-4 s
<b>Materials</b>		<b>Reflow Process</b>	
Contact Pin	Copper Alloy	Soldering Temperature, recommended	-
		Peak Soldering Time, recommended	-

## Colours

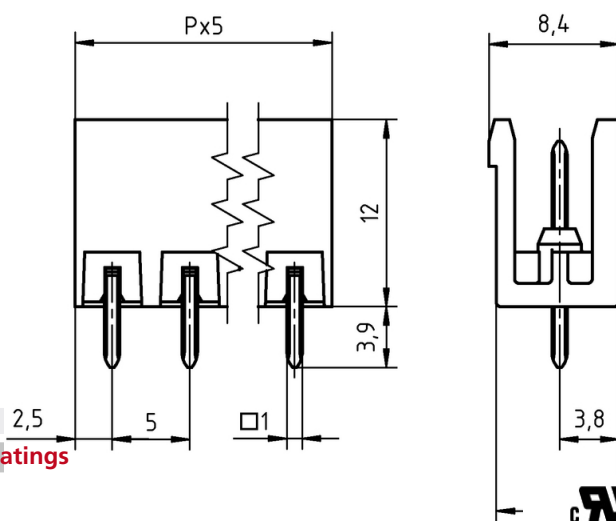
	GREEN, RAL 6018
	BLACK, RAL 9011
	BASALT GREY, RAL 7012
	LIGHT GREY, RAL 7035
	LIGHT GREEN, similar RAL 6018

Colours according to RAL, there may be variations on colour due to production conditions. Special colours on request.

## Counterparts (Spacing 5.0 mm)

Terminal Block					
AK950	AK955	AK1100	AK1110	AK3950	AK4951

In combination of connectors with different admission data, the lower value is valid.



## Ratings

UseGroup	B	C	D	
Rated Voltage	300 V	150 V	300 V	250 V
Rated Current	15 A	15 A	10 A	12 A
Overvoltage Category				III
Test Voltage	1.60 kV	1.30 kV	1.60 kV	4.0 kV
Pollution Degree				3

## Order Data (Spacing 5.0 mm)

Poles	Width (mm)	Article Designation	Article Number	PU
2	10.00	STL950/2-5.0-V-GREEN	50950025111 F	200
3	15.00	STL950/3-5.0-V-GREEN	50950035111 F	200
4	20.00	STL950/4-5.0-V-GREEN	50950045111 F	200
5	25.00	STL950/5-5.0-V-GREEN	50950055111 E	100
6	30.00	STL950/6-5.0-V-GREEN	50950065111 E	100
7	35.00	STL950/7-5.0-V-GREEN	50950075111 E	100
8	40.00	STL950/8-5.0-V-GREEN	50950085111 D	50
9	45.00	STL950/9-5.0-V-GREEN	50950095111 D	50
10	50.00	STL950/10-5.0-V-GREEN	50950105111 D	50
11	55.00	STL950/11-5.0-V-GREEN	50950115111 D	50
12	60.00	STL950/12-5.0-V-GREEN	50950125111 D	50
13	65.00	STL950/13-5.0-V-GREEN	50950135111 D	50
14	70.00	STL950/14-5.0-V-GREEN	50950145111 D	50
15	75.00	STL950/15-5.0-V-GREEN	50950155111 D	50
16	80.00	STL950/16-5.0-V-GREEN	50950165111 D	50
17	85.00	STL950/17-5.0-V-GREEN	50950175111 D	50
18	90.00	STL950/18-5.0-V-GREEN	50950185111 D	50
19	95.00	STL950/19-5.0-V-GREEN	50950195111 D	50
20	100.00	STL950/20-5.0-V-GREEN	50950205111 D	50
21	105.00	STL950/21-5.0-V-GREEN	50950215111 D	50
22	110.00	STL950/22-5.0-V-GREEN	50950225111 D	50
23	115.00	STL950/23-5.0-V-GREEN	50950235111 D	50
24	120.00	STL950/24-5.0-V-GREEN	50950245111 D	50

## Accessoires

Figure	Designation	Article Number
	Coding Star CS2-5.0/5.08-RED	Order Data: 50000000024
	Separating Element SE-STL950-GREEN	Order Data: 50950000002