

# Series 1007/G

- Test probe for cable harness testing
- Screwable - threaded design - against the creeping out of the Test Probe out of the receptacle
- Short center

## Mechanical Data

Center	1.27 mm/50 mil
Temperature Range	-30 °C - +120 °C
Full Travel	5.00 mm
Working Travel	4.00 mm
Pre-loaded Spring Force	0.20 N
Spring Force at Working Travel	1.10 N

## Electrical Data

Max. Current Rating	3.0 A
Typical Continuity Resistance	<= 50 mOhm

## Materials

Barrel	Bronze, gold-plated
Spring	Spring Steel, gold-plated
Plunger	CuBe, gold-plated
Receptacle	Bronze, gold-plated

## Recommended Diameter of Drill

HP 2361.1 (Trolitax)	0.99 mm
HGW 2372	1.00 mm

## Available Screw Tools

Article Designation	max. Tip Diameter	max. Plate Diameter
WFS 1007/G-1.27-1.0	1.0	1.0

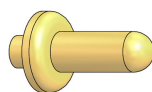
## Tip style - Diameter - Plating



B	C	D	D	F
0.40C Au	0.90C Au	0.40C Au	0.64C Au	0.40C Au

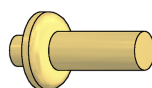


F
0.64C Au



D7xxx
Au

Tip Style	Tip-Ø mm A	Plate-Ø mm B	Tip Length mm C	Overall length mm D	Installation height mm E	Screw Tool
D7001	0.60	1.00	1.80	29.70	11.30	WFS 1007/G-1.27-1.0
D7002	0.60	1.00	2.60	30.50	12.10	- "
D7003	0.50	0.90	1.40	29.30	10.90	- "
D7008	0.50	0.90	1.00	28.90	10.50	- "
D7010	0.50	1.00	3.60	31.50	13.10	- "
D7011	0.50	1.00	4.00	31.90	13.50	- "
D7012	0.50	0.90	0.80	28.70	10.30	- "
D7013	0.50	0.90	2.00	29.90	11.50	- "
D7014	0.50	0.90	3.50	31.40	13.00	- "
D7015	0.80	1.30	2.60	30.50	12.10	/



F7xxx
0.50 Au

Tip Style	Tip-Ø mm A	Plate-Ø mm B	Tip Length mm C	Overall length mm D	Installation height mm E	Screw Tool
F7016	0.50	1.00	0.60	28.50	10.10	WFS 1007/G-1.27-1.0

## How to Order

<b>1007/</b>	<b>G</b>	<b>-</b>	<b>B</b>	<b>-</b>	<b>1.1 N</b>	<b>-</b>	<b>Au</b>	<b>-</b>	<b>0.4</b>	<b>C</b>
<b>1</b>	<b>2</b>	<b>3</b>	<b>4</b>	<b>5</b>	<b>6</b>	<b>7</b>				

1. Series 2. Threaded Design 3. Tip Style  
4. Spring Force 5. Tip Plating 6. Tip Diameter  
7. Tip Material (only for CuBe)

# Series 1007/G

